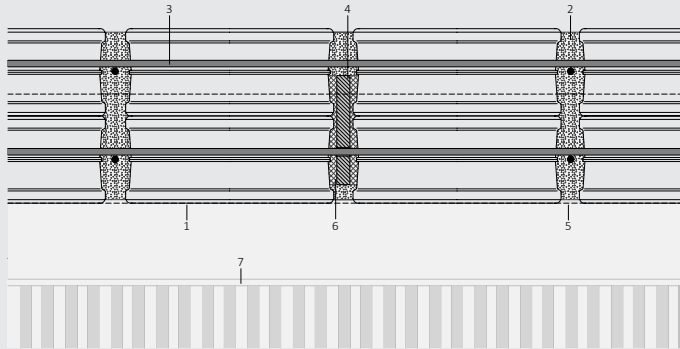
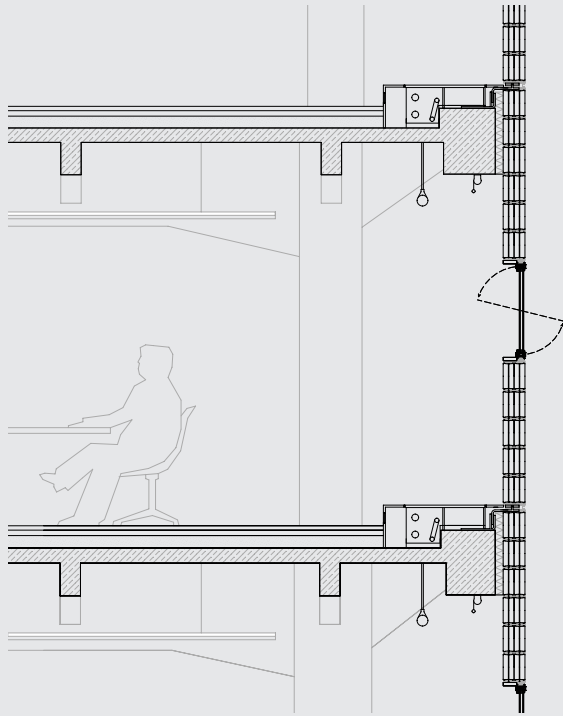


upper floors  
(office)

The standard floors are also based on the axis grid of the historical design. The floor plan is reduced to the infrastructural supply in the center and four new sanitary zones were created in the unexposed outer corners. The space in between is used and designed by the respective users of the floors individually according to their needs.



*„In order to correspond to Behren's prevailing structure, all supporting steel structures disappear inside the glass block joints and are only visible horizontally in the form of a supporting window band.“*



# THE TRANSFORMATION OF A TOBACCO WAREHOUSE